



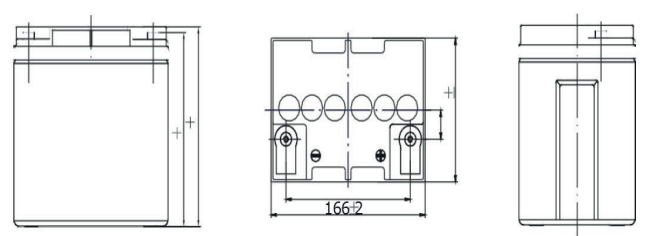
SPECIFICATIONS

Nominal Voltage	12 V	
Rated Capacity (20 hour rate)	26.0 Ah	
Rated Capacity	20 hour rate(1.75V/cell,25°C/77°F)	26.0Ah/1.30A
	10 hour rate(1.75V/cell,25°C/77°F)	24.0Ah/2.40A
	5 hour rate (1.75V/cell,25°C/77°F)	23.0Ah/4.6A
	3 hour rate (1.75V/cell,25°C/77°F)	21.0Ah/7.0A
	1 hour rate (1.60V/cell,25°C/77°F)	16.4Ah/16.4A
Max. discharge current	360A(5 Sec.)	
Internal Resistance	Full charged at 25°C : Approx 15mΩ	
Capacity affected by Temperature	40°C (104°F)	103%
	25°C (77°F)	100%
	0°C (32°F)	86%
Self-Discharge	ORBUS GP series battery may be stored for up to 6 months at 25°C (77°F) and then a freshening charge is required. For higher temperatures the time interval will be shorter.	
Charge (Constant Voltage) 25°C (77°F)	Cycle Use	Initial Charging Current Less than 7.2A Voltage 14.4-15.0V
	Float Use	Voltage 13.5-13.8V

MECHANICAL SPECIFICATIONS

Dimension (L x W x H)	175 x 166 x 126 mm
Weight	8 Kg
Terminal Type	T12
Case Material	ABS
Chemistry	Pb

DIMENSIONAL SPECIFICATIONS



Constant Current Discharge (Amperes) at 25°C (77°F)

FV/Time	5min	10min	15min	20min	30min	45min	1hr	2hr	3hr	4hr	5hr	6hr	8hr	10hr	20hr
1.85 V	65.2	40.2	33.9	29.2	21.1	14.8	13.9	8.19	6.76	4.73	4.28	3.57	2.67	2.19	1.23
1.80 V	73.7	45.1	36.6	31.4	22.1	16.1	15.36	9.09	7.01	5.45	4.48	3.72	2.92	2.34	1.27
1.75 V	80.6	50.5	38.5	33.1	23.6	18.5	16.46	9.49	7.11	5.53	4.63	3.92	3.01	2.48	1.31
1.70 V	88.2	53.8	40.6	34.3	25.2	19.6	16.99	9.71	7.23	5.93	4.78	4.10	3.07	2.59	1.36
1.65 V	95.3	58.3	43.8	35.5	26.1	20.3	17.59	10.10	7.35	6.12	5.00	4.23	3.13	2.71	1.39
1.60 V	99.8	60.8	46.8	36.6	27.8	21.8	18.86	10.60	7.50	6.42	5.19	4.42	3.23	2.86	1.42

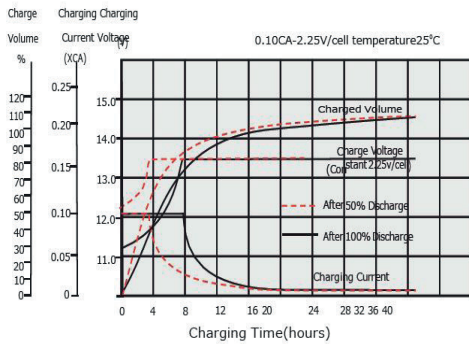
Disclaimer: Manufacturers have the right to self-modify the parameters of the product updates, please keep in touch with manufacturers to obtain the latest information.

Constant Power Discharge (Watts) at 25°C (77°F)

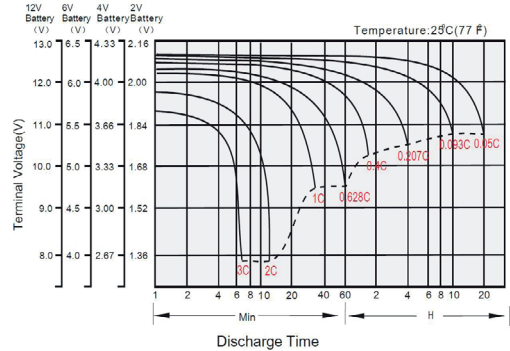
FV/Time	5min	10min	15min	20min	30min	45min	1hr	2hr	3hr	4hr	5hr	6hr	8hr	10hr	20hr
1.85 V	123.6	76.2	63.1	54.8	40.3	27.5	26.1	16.2	10.9	8.88	8.15	6.77	5.12	4.28	2.35
1.80 V	133.9	81.9	66.2	57.3	40.8	29.6	29.1	16.9	11.6	9.96	8.30	6.87	5.41	4.33	2.37
1.75 V	142.5	88.5	68.3	58.7	42.1	32.6	29.3	17.1	11.8	10.34	8.34	7.03	5.46	4.52	2.39
1.70 V	151.1	93.3	70.4	59.1	43.1	33.8	29.6	17.3	12.1	10.36	8.37	7.15	5.49	4.59	2.44
1.65 V	157.9	96.4	73.4	59.4	43.6	34.4	29.9	17.4	12.6	10.42	8.49	7.18	5.54	4.70	2.47
1.60 V	161.6	98.6	76.5	59.5	46.4	35.6	30.95	17.6	12.9	10.63	8.55	7.31	5.58	4.74	2.48

Disclaimer: Manufacturers have the right to self-modify the parameters of the product updates, please keep in touch with manufacturers to obtain the latest information.

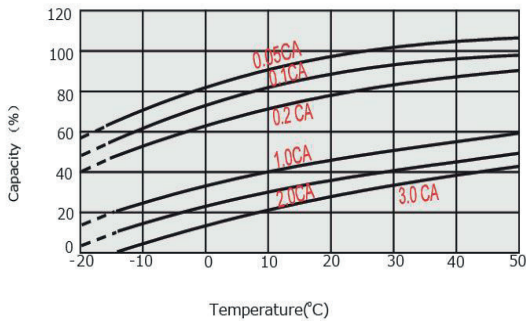
Float Charging Characteristics



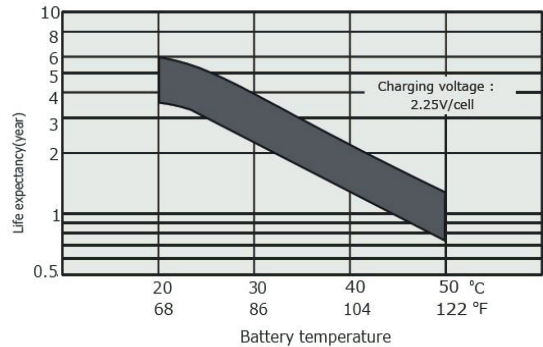
Discharge Characteristics



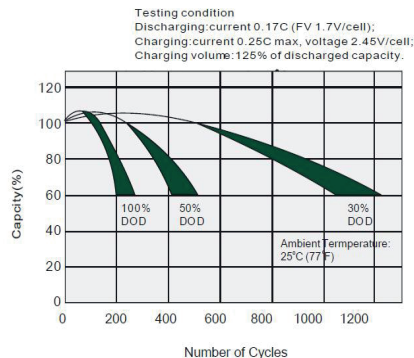
Temperature Effects in Relation to Battery Capacity



Effect of Temperature on Long Term Float Life



Cycle Life in Relation to Depth of Discharge



Self Discharge Characteristics

